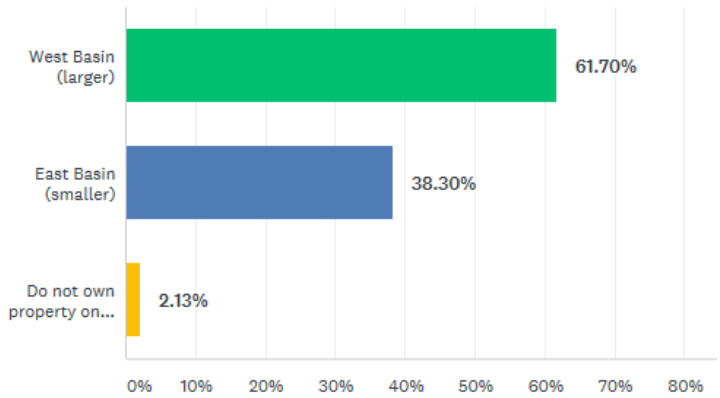


Q1

Which basin do you own property on?

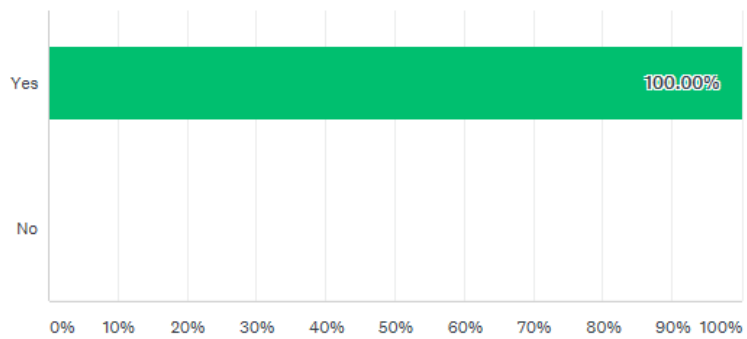
Answered: 47 Skipped: 1



Q2

Do you own and operate a boat at least once per year?

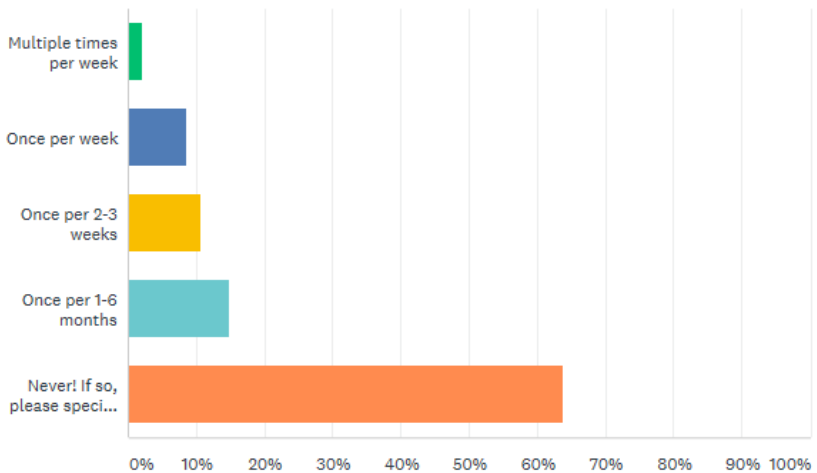
Answered: 47 Skipped: 1



Q3

How often do you drive your boat through the current culvert during summer?

Answered: 47 Skipped: 1



Customize

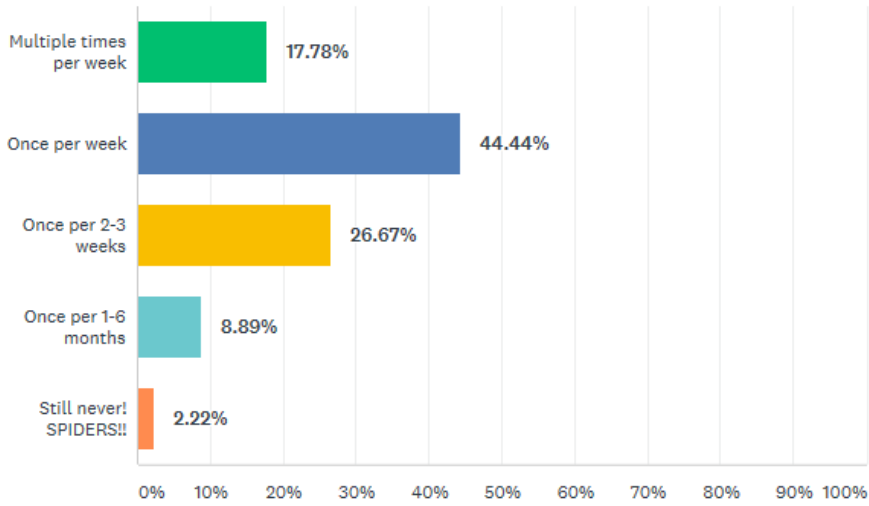
28 Yes, 1 Maybe, 1 No

Q4

Customi

What would be your new usage through the culvert if it were larger?

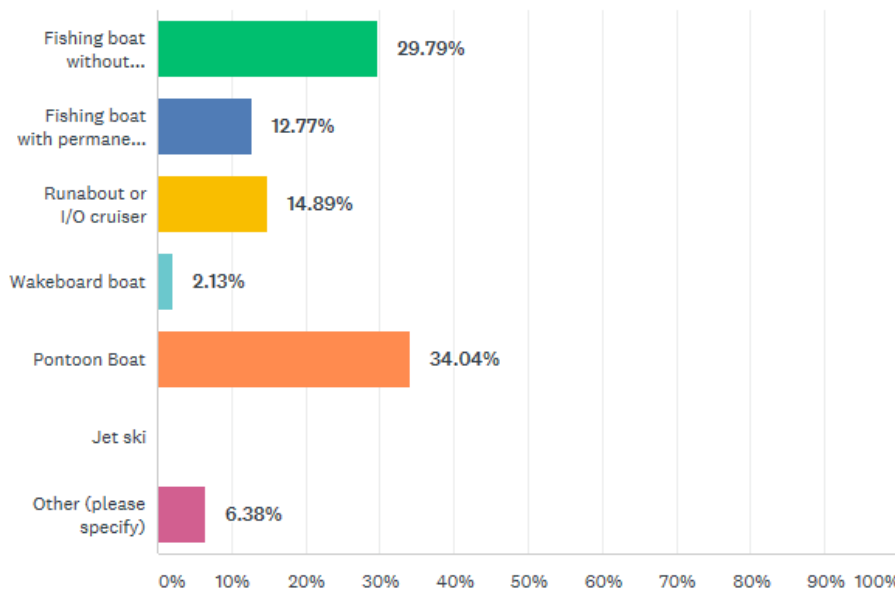
Answered: 45 Skipped: 3



Q5

What type of boat (primary) do you have?

Answered: 47 Skipped: 1

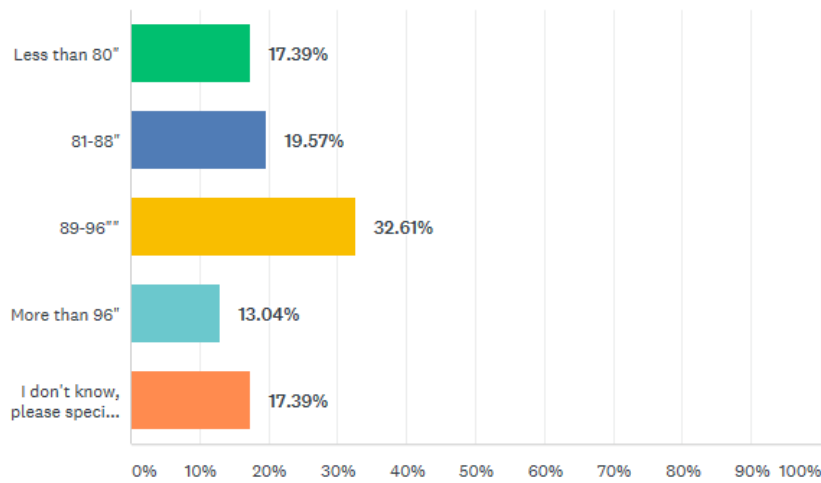


1 paddleboat, 1 deck boat (runabout or I/O cruiser) and 1 Fishing boat without windshield

Q6

What is the beam (i.e. width) of your primary boat?

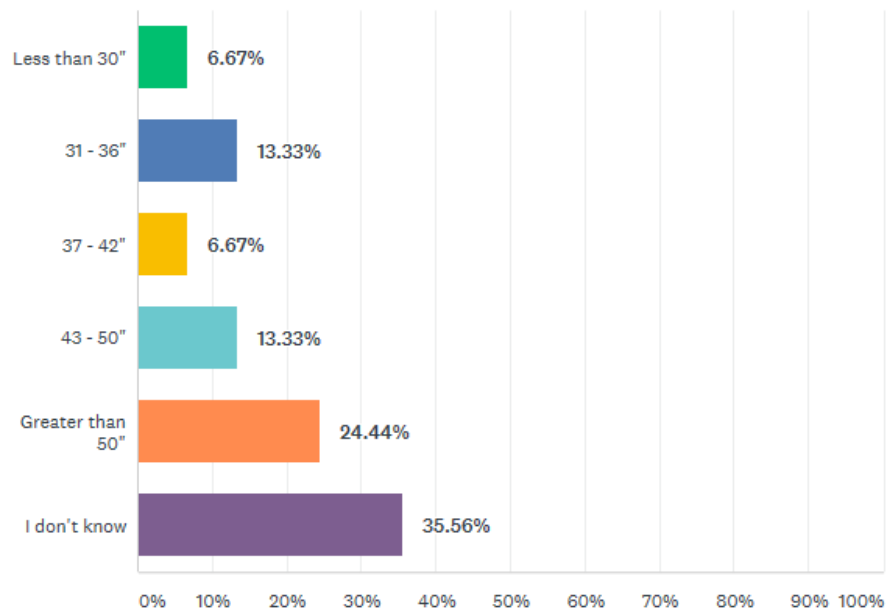
Answered: 46 Skipped: 2



Q7

What is the height from water line to tallest feature on boat?

Answered: 45 Skipped: 3



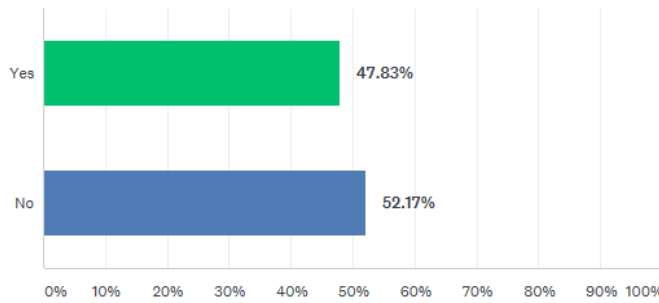
1 81-88", 7 89-96"

Q8

Customize Exp

Do you have a secondary boat that you would like to pass through culvert

Answered: 46 Skipped: 2



Q9

If you have a secondary boat, please briefly describe it below. N/A if no second boat

Fishing boat without/removable windshield -1

Fishing boat with permanent windshield - 3

Runabout or I/O Cruiser -1

Wakeboard Boat

Jet Ski - 1

Pontoon Boat -2 Unmotorized Craft – 1

Q10

Is there anything more you would like to tell us regarding the culvert replacement?

No – 8

Keep it small to minimize traffic (or don't replace) - 5

Support proposed or larger culvert – 6

Current culvert is dangerous – 1

Desire passage for pontoon boats or build a bridge – 9

Original culvert shouldn't have happened in the first place - 2

Summarized Stats based on Individual Responses:

If 13x13 culvert were built, what percentage of boats could pass through? Primary Boat: 62.5% Yes, 23.5% No

Primary does not pass through, but secondary boat will: additional 25% (87.5% of summed respondents would have primary or secondary boat that could pass through 13x13)

12.5% of respondents had no boat that could pass through a culvert

12.5% of respondents had 2 boats that could pass through proposed culvert 12.5% or respondents had primary boats that could pass through, but secondary boat could not